

A place for...

Day Respite

The day respite service at the Merlin MS Centre is held in a bright and welcoming environment which has all the facilities to meet the needs of each client.

The service is run by qualified staff and volunteers to assist with all personal needs. This means that service users do not need to have a carer with them for the duration of their day at the centre.

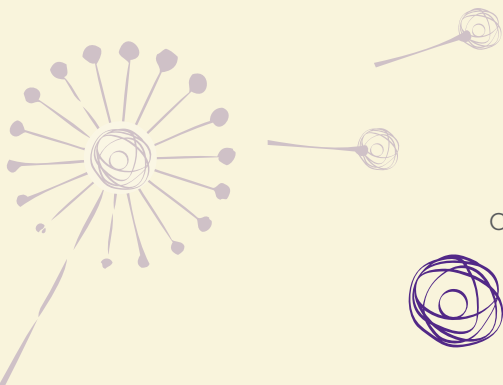
Structured activities are offered to help promote independence, self-esteem and confidence.

Light lunch, refreshments and a well-being therapy are included as part of the Day Respite package.

The service is available to anyone with a neurological or complex medical condition.

10.00am-4.00pm every Monday and Friday.

Contact Ali Lochrie Respite Manager for more information on 01726 885530



Charity No. 1093691



Merlin
MS Centre

A time for...

Social groups

Wednesday Club

(meets fortnightly) 11.00am - 1.00pm

Social activities including quizzes and bingo.
Call the centre for more details on **01726 885530**

There is no charge, but a contribution towards lunch
would be appreciated.

Funday Friday

Every Friday 1.00pm - 3.00pm

Come and try out different
craft activities and meet new people.

This is open to anyone in Cornwall, particularly
those that may feel isolated or lonely.

If you would like to join us for a sandwich lunch from
12.00pm then you are welcome. (Booking essential)
Donations appreciated.

Please contact Ali Lochrie



01726 885530

www.merlinmscentre.org.uk

Merlin MS Centre, Bradbury House,
Hewas Water, St Austell, Cornwall, PL26 7JF